

Rotary Chemical Plastic Hand Pump DJPP200RP/DJR200RP

WARNING:

Read carefully and understand all INSTRUCTIONS before operating. Failure to follow the safety rules and other basic safety precautions may result in serious personal injury. Save these instructions in a safe place and on hand so that they can be read when required.

TECHNICAL DETAILS

	DJPP200RP	DJR200RP
Revolutions per litre	3	3
Construction	Polypropylene	Ryton
Suitable for:	Acid, alkaline etc.	Aggressive chemicals
Acid	Yes	Yes
Alkaline	Yes	Yes
Alcohol	Yes	Yes
AdBlue	Yes	Yes
Some chemicals	Yes	Yes
Diesel	Yes	Yes
Water	Yes	Yes
Machine oil	Yes	-
Thinners	-	Yes

PRODUCT DATA:

Flow rate : up to 10 GPM

Capacity: 300 cc per stroke

Weight: 3.5LB

Bung adapter: 2" thread

Suction tube length: 42" (106cm)

Suction tube diameter: 1" (25mm)

Discharge spout: 3/4" x step tapered slip fit

Applicable drum: 15,30 and 55 gallon containers

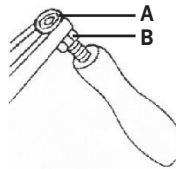
SAFETY PRECAUTION:

WARNING: Read and understand all instructions.

WARNING: The warnings, cautions, and instructions discussed in this instruction manual cannot cover all possible conditions or situations that could occur. It must be understood by the operator that common sense and caution are factors which cannot be built into this product, but must be supplied by the operator.

CRANK ARM & HANDLE ASSEMBLY:

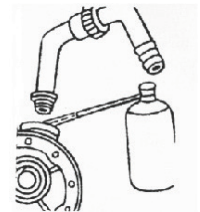
- Remove one metal nut (A) from the threaded shaft of the handle.
- Using fingers, tighten the remaining nut (B) against the plastic handle.
- Insert the nut that was removed in step a into the crank arm.
- Screw the metal shaft of the pump handle into the crank arm until the shaft is flush with the back side of nut (A) in the crank arm.
- Loosen nut (B) from plastic handle and tighten against the crank arm.



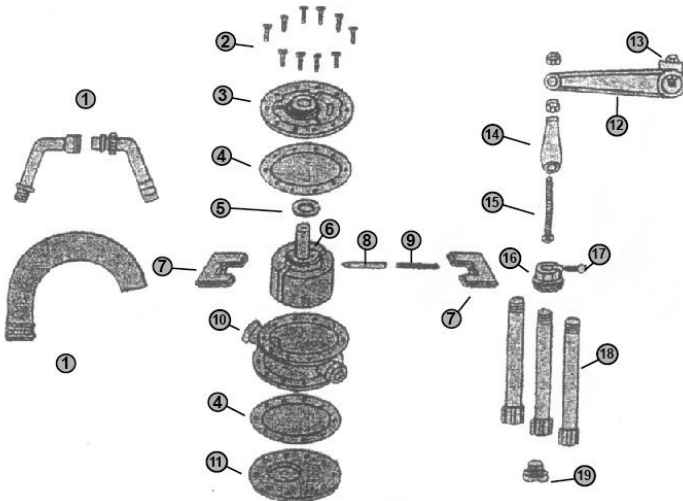
NOTE: Plastic handle should spin freely on threaded metal shaft when properly assembled.

LUBRICATION:

Spray into pump body using a Teflon type lubricant spray. If pumping solvents, the pump should be lubricated once a week or more, depending on use. It should be rinsed thoroughly after each use with a suitable solvent for the material being pumped.



PART LIST



NO.	DESCRIPTION	QTY
1	DISCHARGE SPOUT	1
2	SCREW & NUT	20
3	FRONT CASING	1
4	GASKET	2
5	OIL SEAL	1
6	ROTOR	1
7	VANE	2
8	SPRING SHAFT	1
9	VANE SPRING	1
10	CYLINDER	1
11	REAR CASING	1
12	CRANK ARM	1
13	SET SCREW	1
14	HANDLE	1
15	HANDLE SHAFT	1
16	BUNG ADAPTER	1
17	LOCKING SCREW	1
18	SUCTION TUBE	3
19	STRAINER	1