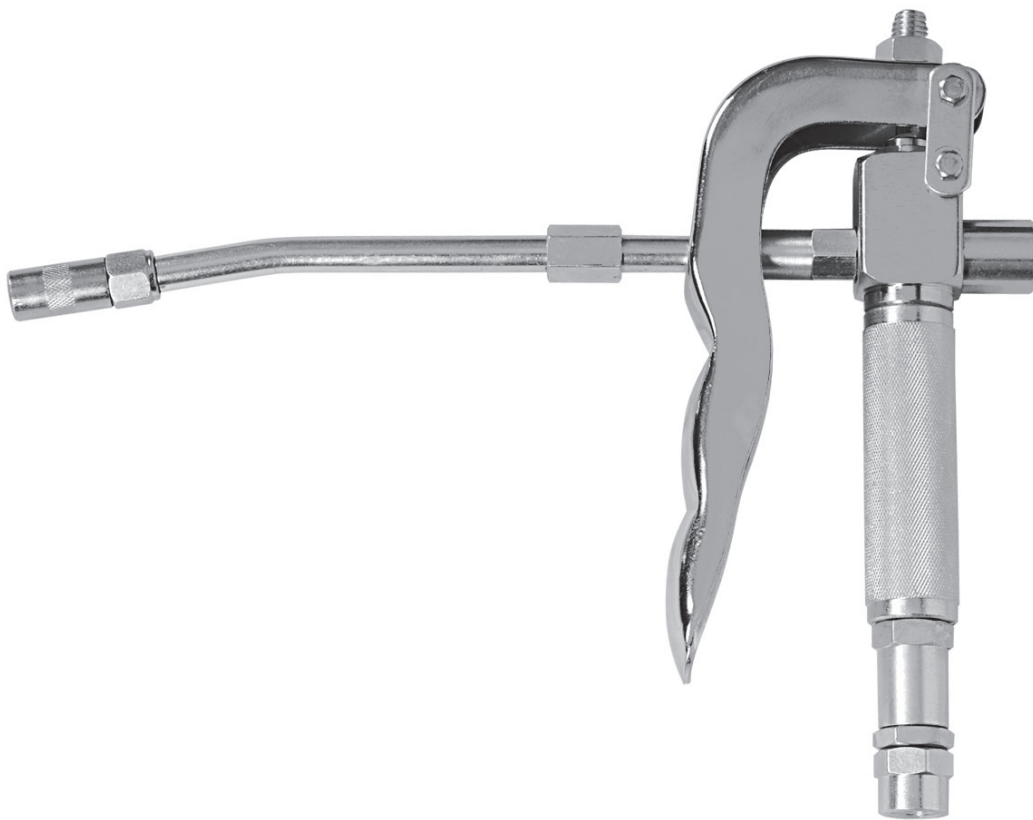


Grease Control Valve Instruction Manual



Item No.: DITI 1785701



WARNING:

Read carefully and understand all INSTRUCTIONS before operating. Failure to follow the safety rules and other basic safety precautions may result in serious personal injury.

Save these instructions in a safe place and on hand so that they can be read when required.

Keep these instructions to assist in future servicing.



LEADERS IN FLUID TRANSFER SOLUTIONS

IMPORTANT!

- 1. Read the safety warnings and instructions in this manual carefully, before installation and start-up of the control handle. It is the responsibility of the purchaser to retain this manual for future reference. Failure to comply with the recommendations stated in this manual may damage the control handle and void factory warranty.**
- 2. Airborne particles and loud noise hazards.**
- 3. Wear ear and eye protection.**
- 4. Before doing any maintenance on the control handle, be certain all pressure is completely vented from the pump, suction, discharge, piping, and all other openings and connections.**
- 5. Be certain the air supply is locked out or made non-operational, so that it cannot be started while work is being done on the control handle. Be certain that approved eye protection and protective clothing are worn at all times in the vicinity of the control handle.**
- 6. Failure to follow these recommendations may result in serious injury or death.**

CAUTION!

Maximum fluid pressure 400BAR/5800PSI. Under no circumstances should the control handle be aimed at any person body. Personal injury may be caused.

PRODUCT DESCRIPTION

1. The control handles are used for dispensing automotive lubricants.

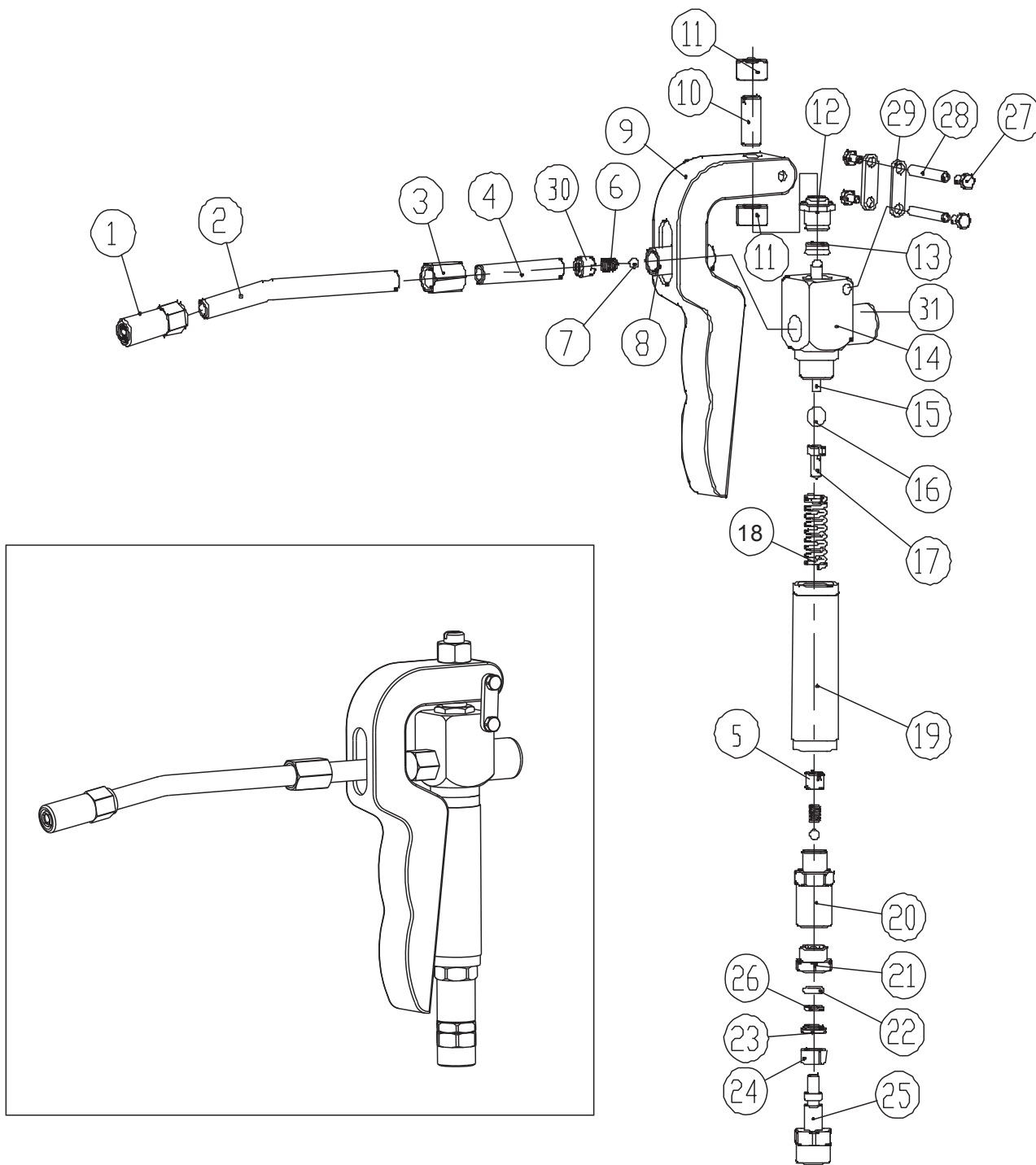
OPERATION

1. Connect the control handle to the lubricant supply line(1/4 BSP or 1/4 NPT male thread required).
2. Open the manual tip.
3. Squeeze control handle trigger. When the required amount of product has been dispensed, release the trigger to stop delivery. Close the manual tip.

TROUBLE SHOOTING

1. If lubricant leaks around inlet and threads; apply thread sealant to tighten threads.

EXPLODED AND PARTS LIST



Part No.	Description	Q'ty	Part No.	Description	Q'ty
1	4jaws gease fitting	1	17	Set	1
2	Rigid delivrey pipe	1	18	Spring	1
3	Hexad tie-in	1	19	Handle	1
4	Take-over tube	1	20	Valve seat	1
5	Adjust bolt	1	21	Nut	1
6	Spring	2	22	O-ring	1
7	Steel ball	2	23	Block ring	1
8	Unilateralism vave	1	24	Axis tile	2
9	Wrench	1	25	Axes	1
10	Adjust bolt	1	26	Liner ring	1
11	Nut	2	27	Hexad bolt	4
12	Guide	1	28	Join pipe	2
13	Gasket	1	29	Join piece	2
14	Gun seat	1	30	Adjust Bolt	1
15	Rod	1	31	Clump Weight	1
16	Steel ball	1			



LEADERS IN FLUID TRANSFER SOLUTIONS

STM AUSTRALIA
1/615 WARRIGAL RD
ASHWOOD VIC 3147
AUSTRALIA

T 1300 131 531
F 1300 308 508
E ENQUIRIES@STM.NET.AU
W WWW.STM.NET.AU